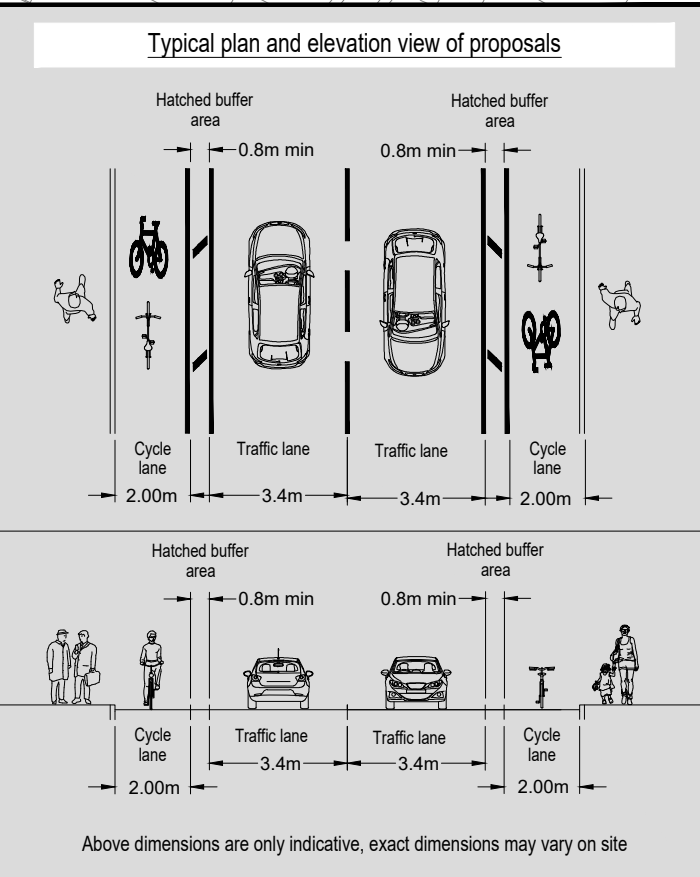
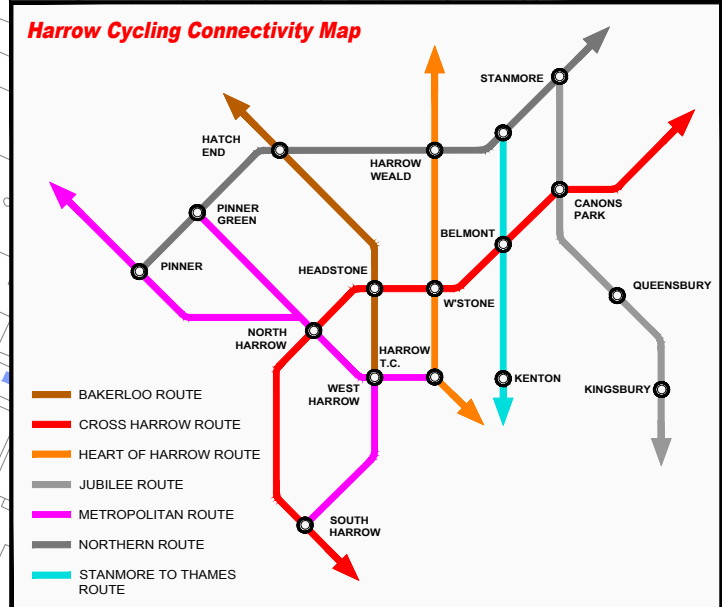
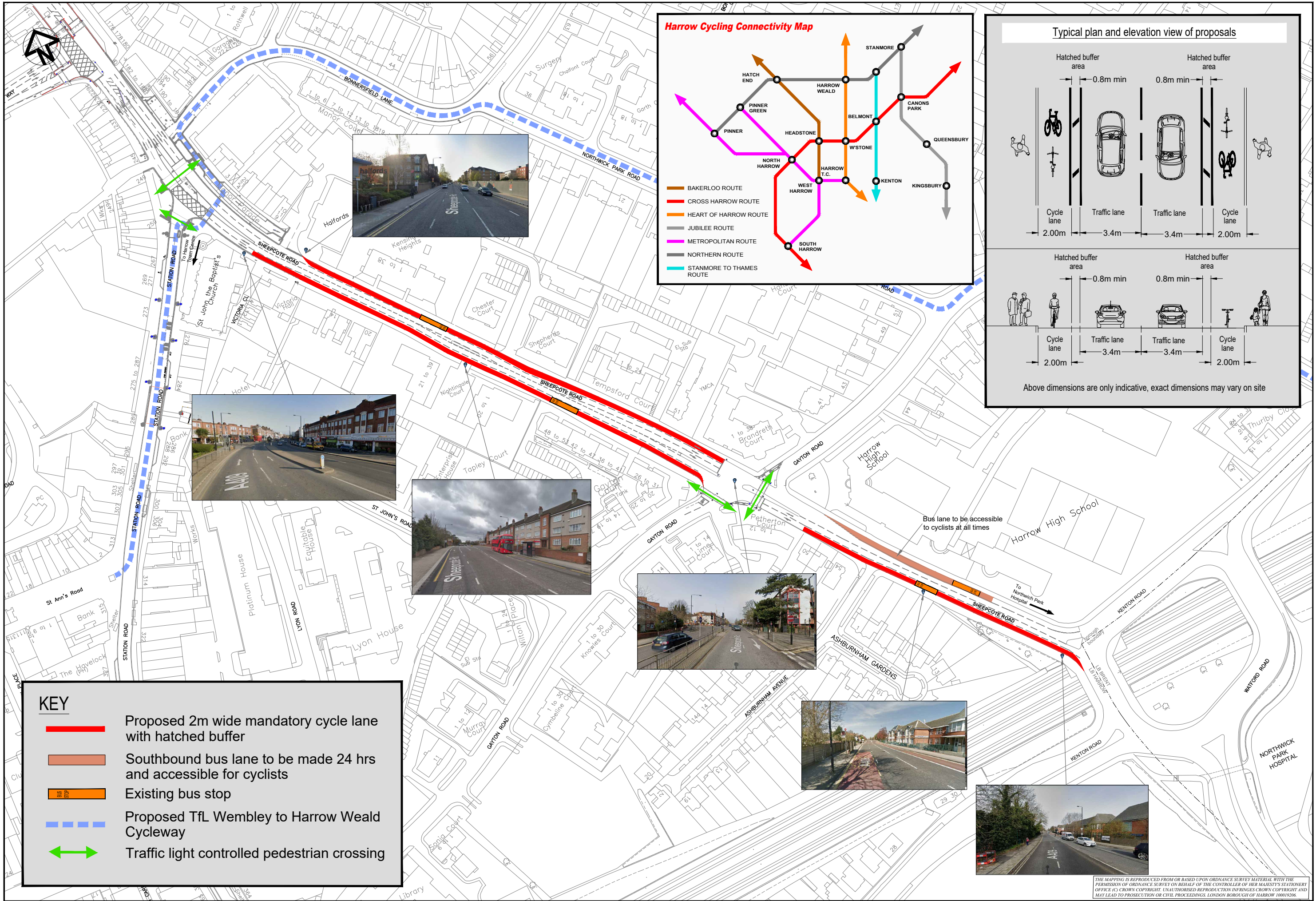


KEY

- Proposed 2 metre wide mandatory cycle lane with hatched buffer
- Proposed reduction in speed limit from 40 MPH to 30 MPH
- Speed Camera - modify to enforce new 30mph vehicle speeds
- Existing bus stop
- Existing Jubilee Cycle Route between Queensbury Station and Stanmore Station
- Traffic light controlled pedestrian crossing

THE MAPPING IS REPRODUCED FROM OR BASED UPON ORDINANCE SURVEY MATERIAL WITH THE PERMISSION OF OR ON BEHALF OF THE CONTROLLER OF HER MAJESTY'S STATIONERY OFFICE (C) CROWN COPYRIGHT. UNAUTHORISED REPRODUCTION INFRINGES CROWN COPYRIGHT AND MAY LEAD TO PROSECUTION OR CIVIL PROCEEDINGS. LONDON BOROUGH OF HARROW 100019206.



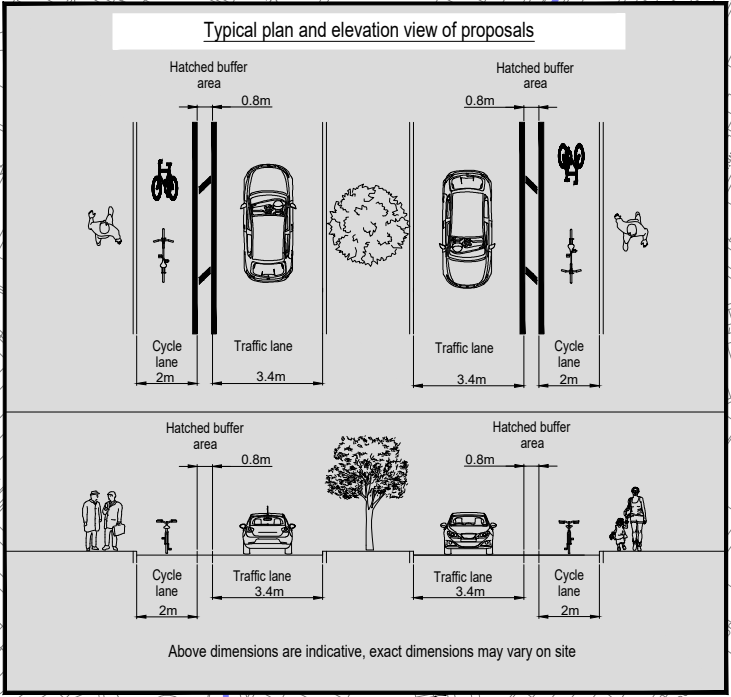
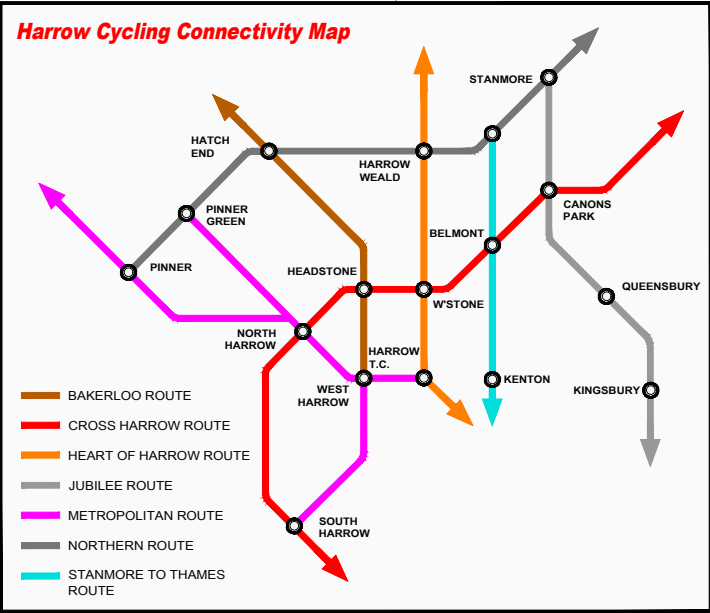
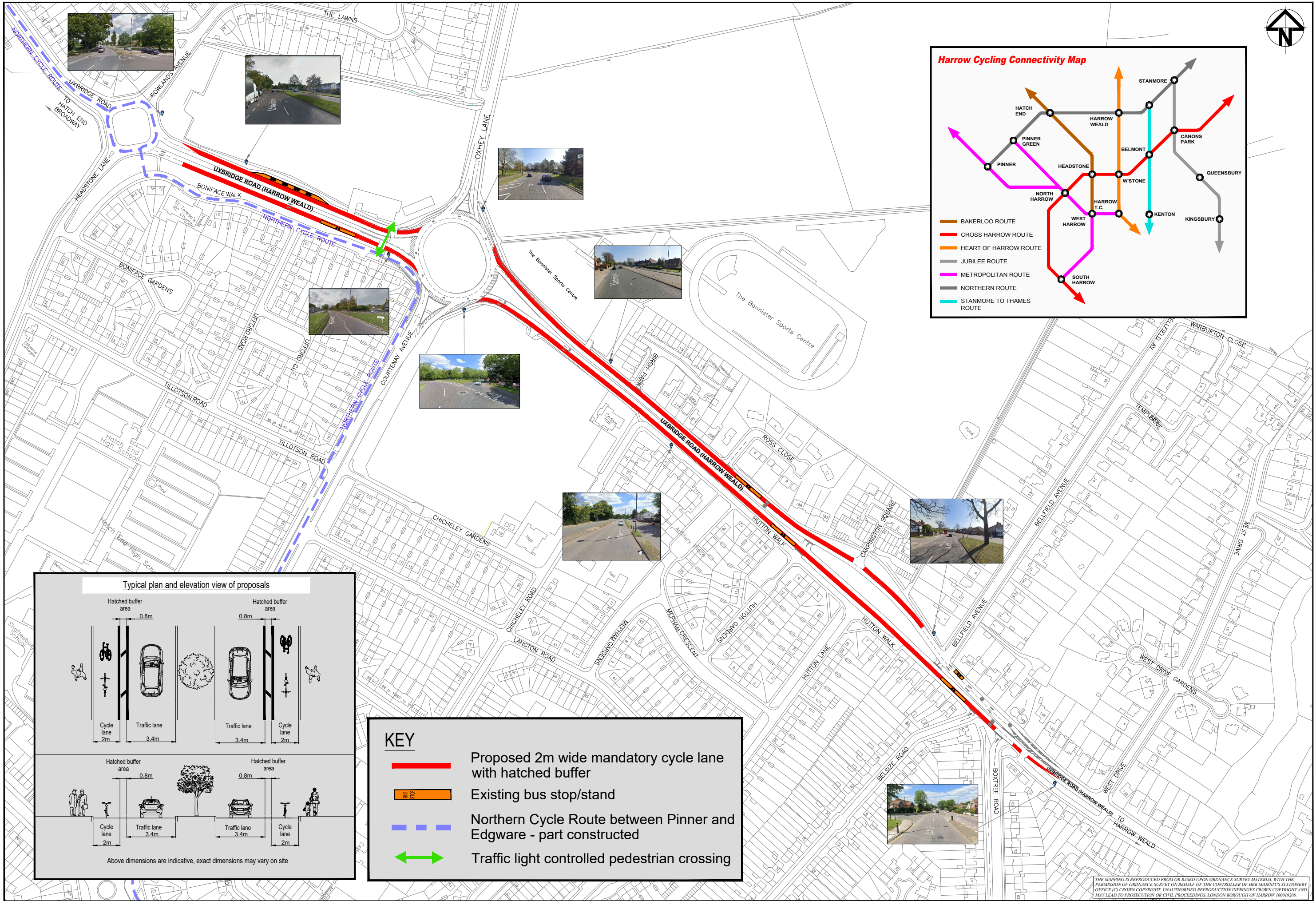
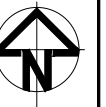
KEY

- Proposed 2m wide mandatory cycle lane with hatched buffer
- Southbound bus lane to be made 24 hrs and accessible for cyclists
- Existing bus stop
- Proposed TfL Wembley to Harrow Weald Cycleway
- Traffic light controlled pedestrian crossing

SHEEPCOTE ROAD CYCLE ROUTE - TFL STREETSPACE PROGRAMME

OVERVIEW

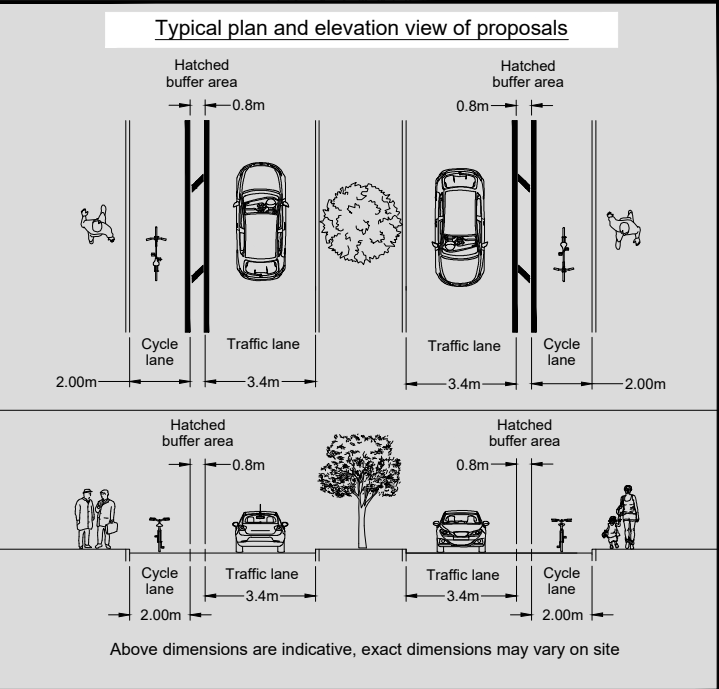
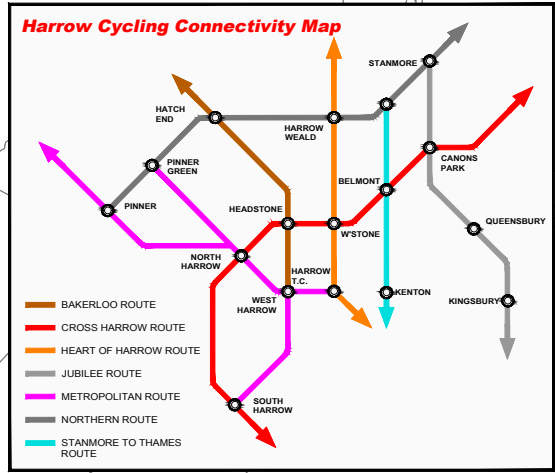
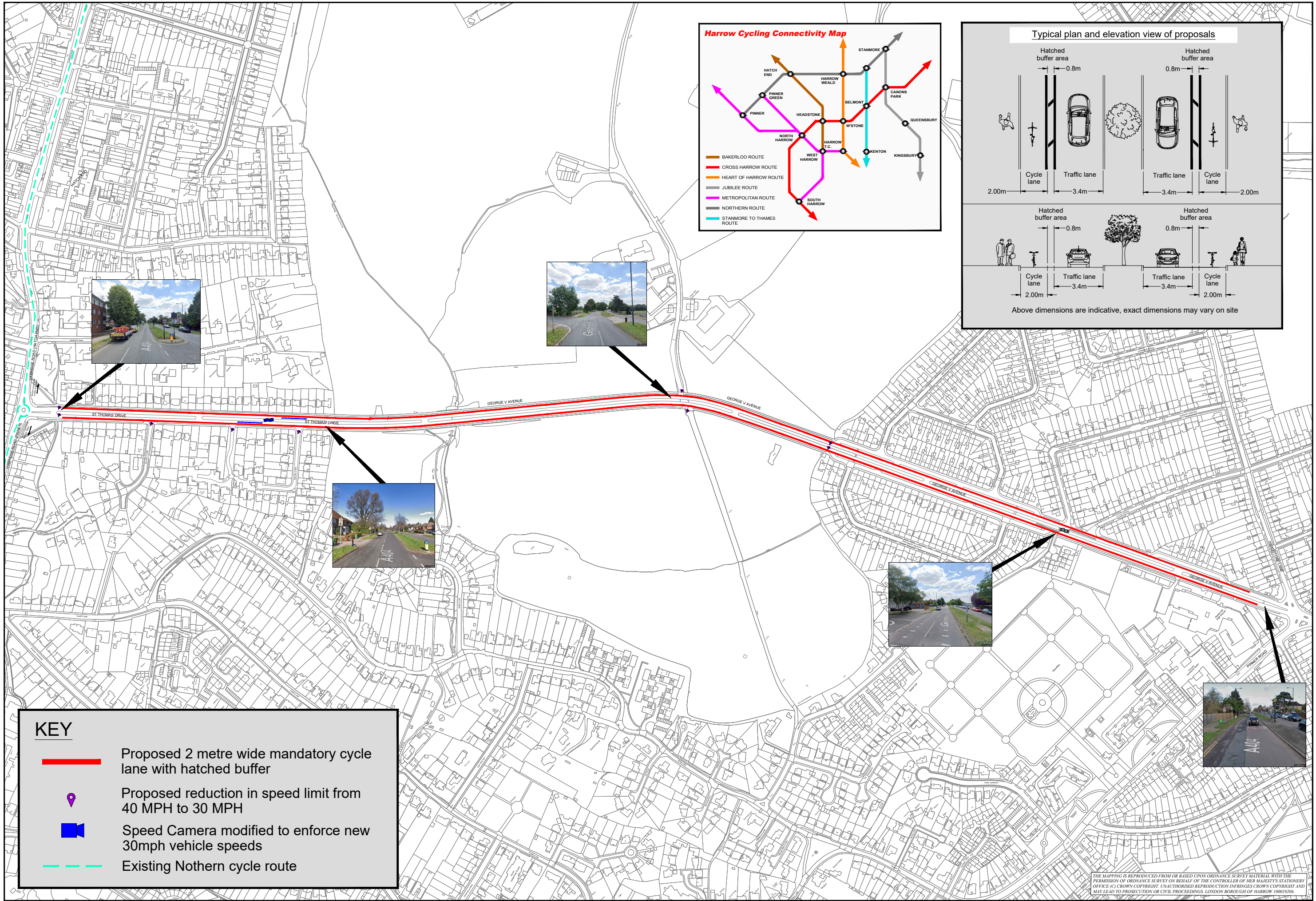
THE MAPPING IS REPRODUCED FROM OR BASED UPON ORDNANCE SURVEY MATERIAL WITH THE PERMISSION OF ORDNANCE SURVEY ON BEHALF OF THE CONTROLLER OF HER MAJESTY'S STATIONERY OFFICE (C) CROWN COPYRIGHT. UNAUTHORISED REPRODUCTION INFRINGES CROWN COPYRIGHT AND MAY LEAD TO PROSECUTION OR CIVIL PROCEEDINGS. LONDON BOROUGH OF HARROW 100019206.



KEY

- Proposed 2m wide mandatory cycle lane with hatched buffer
- Existing bus stop/stand
- Northern Cycle Route between Pinner and Edgware - part constructed
- Traffic light controlled pedestrian crossing

THE MAPPING IS REPRODUCED FROM OR BASED UPON ORDNANCE SURVEY MATERIAL WITH THE PERMISSION OF ORDNANCE SURVEY ON BEHALF OF THE CONTROLLER OF HER MAJESTY'S STATIONERY OFFICE © CROWN COPYRIGHT. UNAUTHORISED REPRODUCTION INFRINGES CROWN COPYRIGHT AND MAY LEAD TO PROSECUTION OR CIVIL PROCEEDINGS. LONDON BOROUGH OF HARROW 100019206.



KEY

- Proposed 2 metre wide mandatory cycle lane with hatched buffer
- Proposed reduction in speed limit from 40 MPH to 30 MPH
- Speed Camera modified to enforce new 30mph vehicle speeds
- Existing Nothern cycle route

THE MAPPING IS REPRODUCED FROM OR BASED UPON ORDINANCE SURVEY MATERIAL WITH THE PERMISSION OF ORDNANCE SURVEY ON BEHALF OF THE CONTROLLER OF HER MAJESTY'S STATIONERY OFFICE (C) CROWN COPYRIGHT. UNAUTHORISED REPRODUCTION INFRINGES CROWN COPYRIGHT AND MAY LEAD TO PROSECUTION OR CIVIL PROCEEDINGS. LONDON BOROUGH OF HARROW 100019206.